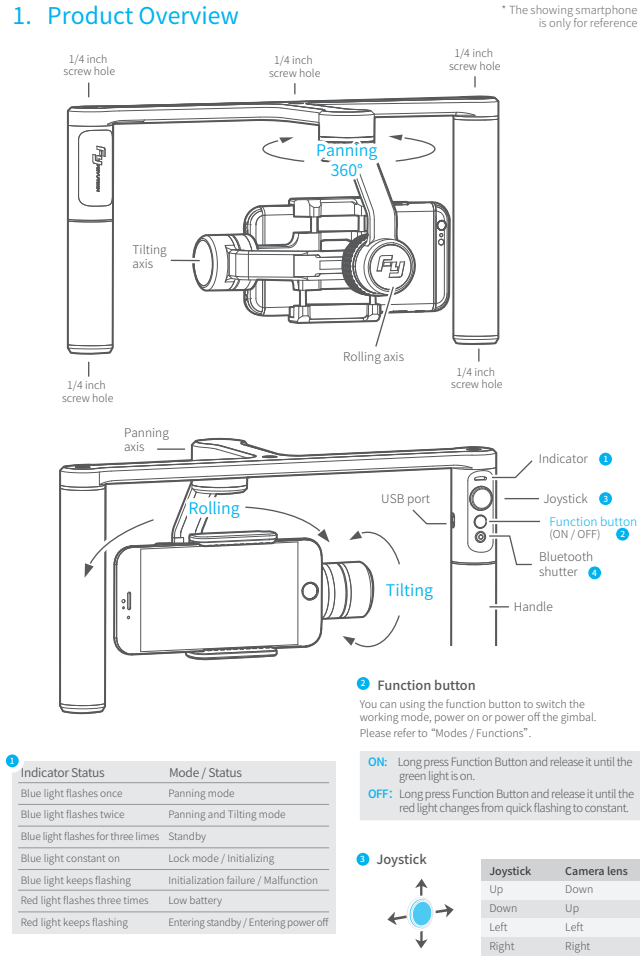




### 3-Axis Gimbal Rig for iPhone

iPhone 7 Plus / 7 / 6s Plus / 6s / 6 Plus / 6  
iPhone SE / 5s / 5c / 5

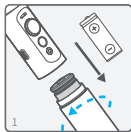
## 1. Product Overview



## 2. User Guide

**Attention !**

- Please install the iPhone before powering on the gimbal
- Please turn off the power when the gimbal is not in use, then remove the iPhone



**1 Install the battery**

Remove the handle and insert one 22650 battery into it.



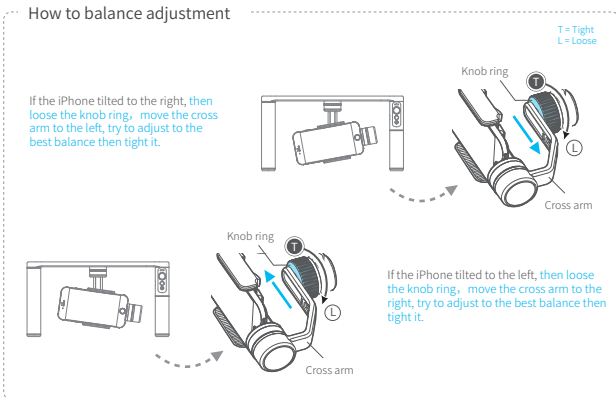
**2 Install the iPhone**

Attach the iPhone by the quick-release adapter, and ensure it is secure.

**Tips:** Please take off the protective casing of the iPhone before installation.

### 3 Balance Adjustment

In order to achieve in a better performance of the gimbal, please try to adjust the iPhone installation to the best balance.



## 3. Modes / Functions

### Working Modes

#### Panning Mode

The phone can move to left or right smoothly along with the handheld moving. The tilting and rolling directions fixed.

\* Boot default mode: Panning mode

#### Panning and Tilting Mode

The phone can move to left or right and tilt up and down smoothly along with the handheld moving. The rolling directions fixed.

#### Lock Mode

The phone stays in its current orientation. The panning, tilting and rolling direction are all fixed.

### Other Functions

#### Panorama

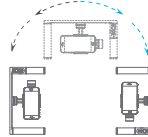
Convenient for the iPhone users to shot panorama photo. As shown, roll the gimbal slowly to the right (or left) 90°, the rolling axis automatically follow to the right (or left) is rotated by 90°.

#### Reset

Reset the tilting axis of the gimbal to initial orientation and initial mode.

#### Standby

In standby mode, keep the gimbal in power-up state, the motor stops working, the indicator light flashes for three times, and single tap again the function button to wake up the gimbal.



## 5. Gimbal Horizontal Angle Adjustment

(Initialize the gimbal)

The horizontal angle needs to be adjusted whenever the following situations happen to the gimbal

- The tilt angle is not leveled with the horizontal surface.
- The roll angle is not parallel to the horizontal surface.
- Under lock mode, the panning angle drifts.

### Adjusting steps:

- In boot-up state, long press the Function Button until the red light flashes quickly to enter standby status, the blue light will flash 3 times periodically.
- Lay the gimbal on a static flat surface and triple tap the Function Button. Initialization is successful when the blue light changes from constant on to flashing 3 times periodically.

When the initialization failed, the LED indicator will flash quickly, repeat step (2) to reinitialize.

## 6. Parameters

Tilting Angle	320°
Rolling Angle	100°
Panning Angle	360°
Tilting Increments	2°/s ~ 75°/s
Panning Increments	3°/s ~ 150°/s
Usage time	8 Hours
Adaption	iPhone 7 Plus/7/6s Plus/6s/6 Plus/6/SE/5c/5s/5
Weight	518g (not including battery and iPhone)

### Package List

Product model	Quantity
SPG Plus	1
Batteries (Type:22650)	1
USB cable	1
Cold shoe mount	1
1/4 inch screw	1
User manual	1
Warranty card	1

### DISCLAIMER

Prohibit any user for any illegal purpose. Users will be responsible for all behaviors of purchase and use products.

The Company assumes no liability for any risks related to or resulting from the debug and use of this product (including the direct, indirect or third-party losses).

For any unknown sources of using, we will not be at any services.

The updating and changes of product firmware and program may cause changes in function descriptions in this user manual, please read the instructions carefully before upgrading the firmware and use the corresponding user manual.

You can get the latest user manual from the official website: [www.feiyu-tech.com](http://www.feiyu-tech.com)

Feiyu Tech reserves the right to amend this manual and the terms and conditions of use the product at any time.

### Attention

- Please correctly assemble the gimbal in accordance with the diagram.
- Please install the iPhone before powering on the gimbal.
- When the gimbal is not in use or placed on the table, please ensure it is powered off.



For more information, please visit our official website  
[www.feiyu-tech.com](http://www.feiyu-tech.com)  
Support Email: [service@feiyu-tech.com](mailto:service@feiyu-tech.com)



[www.feiyu-tech.com](http://www.feiyu-tech.com)