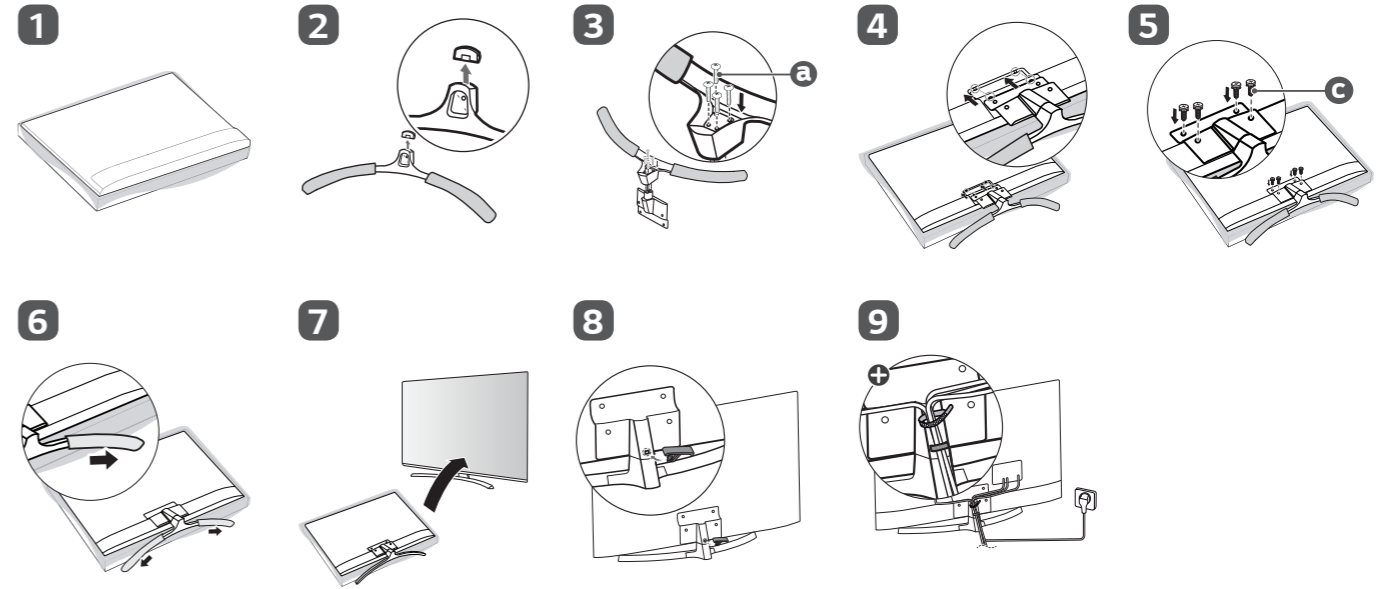


English ·Read **Safety and Reference**.
·For the power supply and power consumption, refer to the label attached to the product.

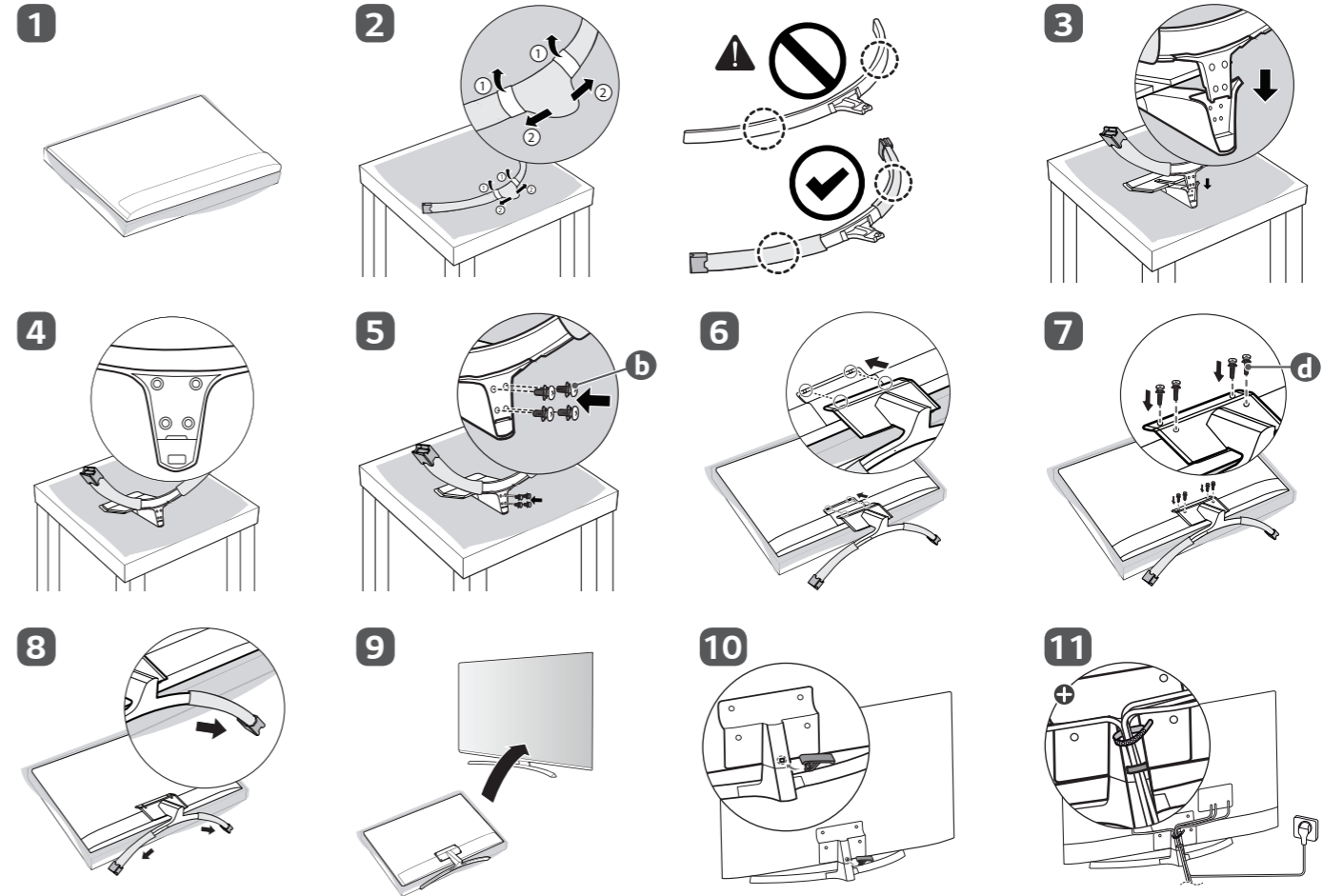
Türkçe ·**Güvenlik ve Referans** bölümünü okuyun.
·Güç kaynağı ve güç tüketimi için ürüne yapıştırılmış olan etikete bakın.



49/55/65UK75*, 49/55/65SK81*

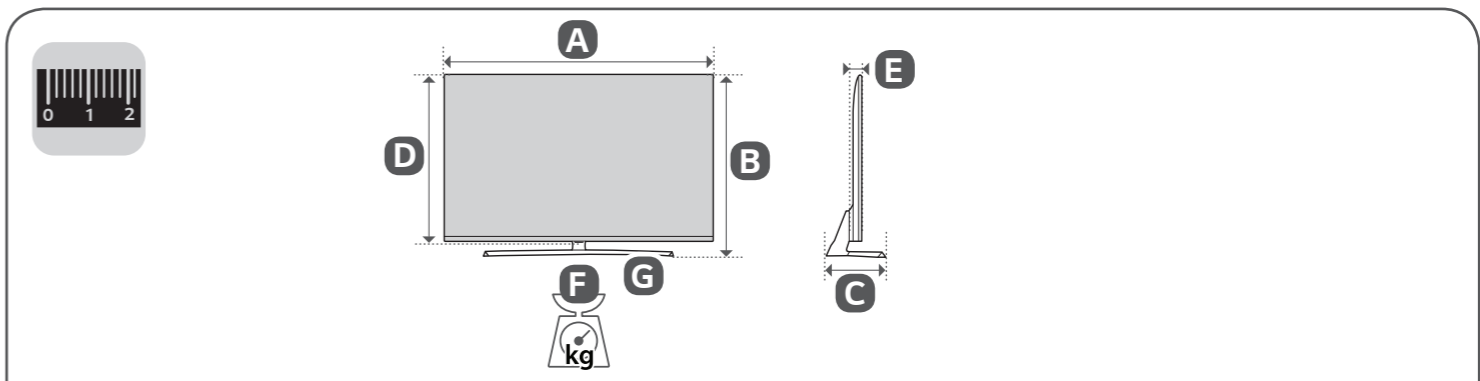
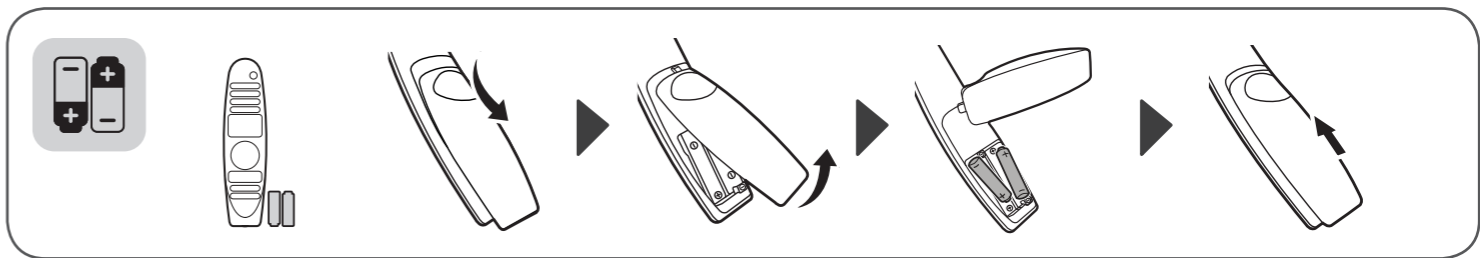
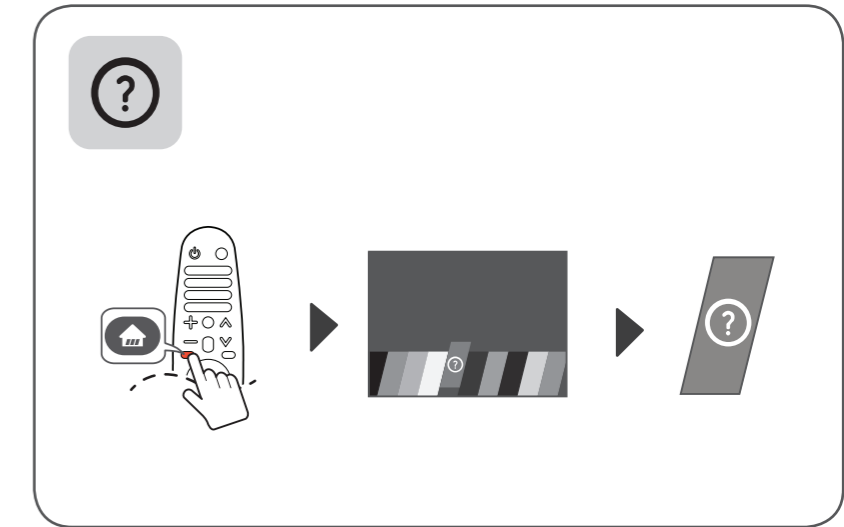
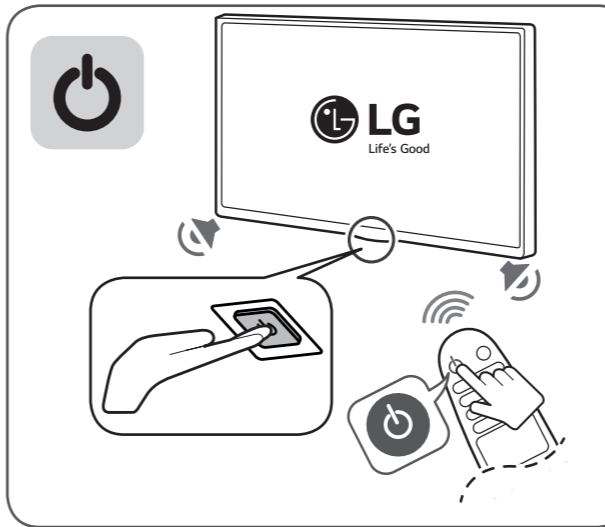
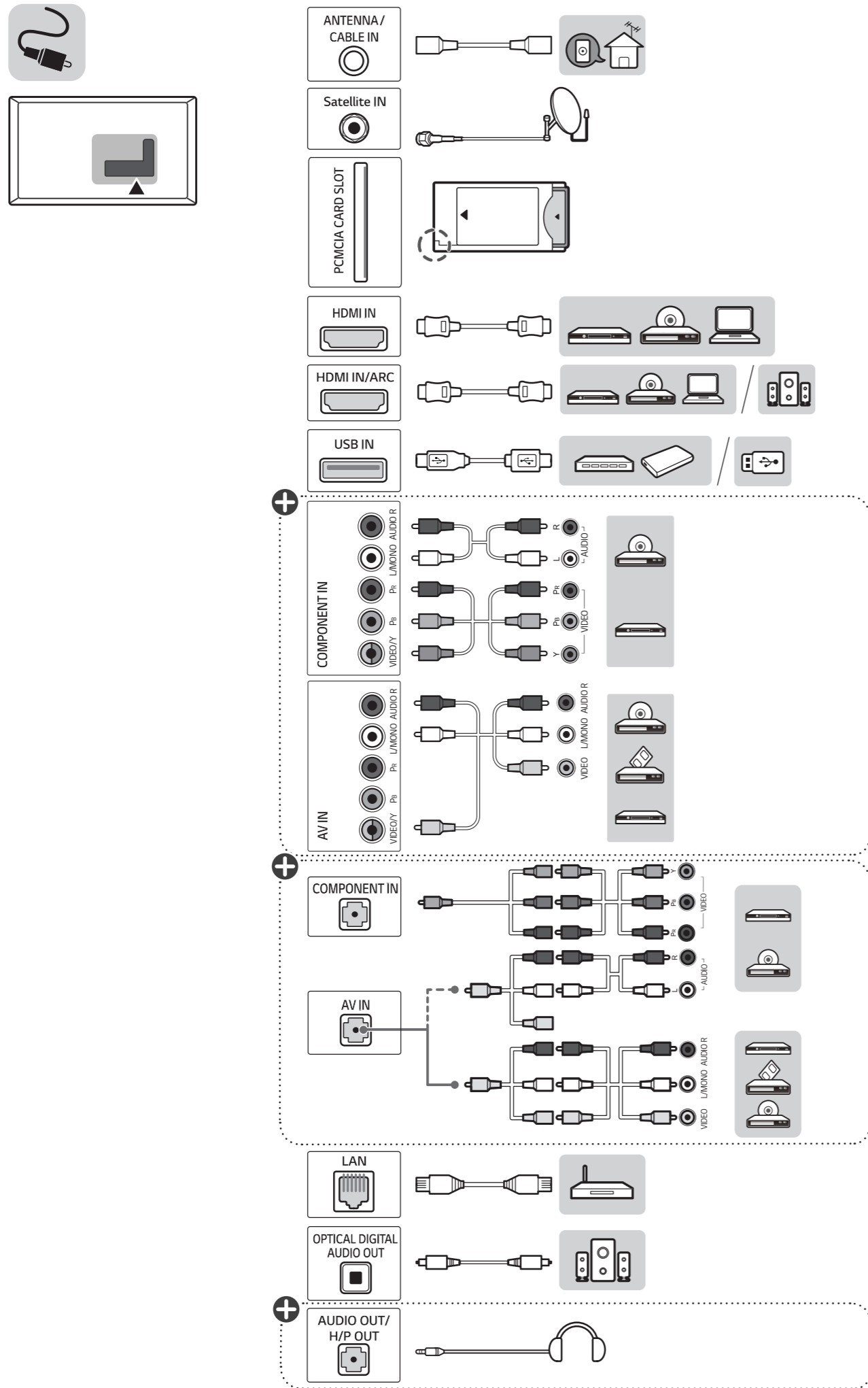


75SK81*



⊕ : Depending on model / Modele bağlı olarak değişiklik gösterebilir





	A	B	C	D	E	F	F-G
	(mm)					(kg)	
49SK8100PLA							
49SK8100LLA							
49UK7550PLA	1102	717	248.4	644	63.3	14.5	13.0
49UK7550LLA							
49UK7550MLA							
49UK7500PLC	1102	703	259	644	63.3	14.5	13.0
55SK8100PLA							
55SK8100LLA							
55UK7550PLA	1237	794	248.4	721	63.3	17.6	16.1
55UK7550LLA							
55UK7550MLA							
55UK7500PLC	1237	779	259	720.9	63.3	17.6	16.1
65SK8100PLA							
65SK8100LLA							
65UK7550PLA	1456	916	318.5	844	63.9	26.2	24.5
65UK7550LLA							
65UK7550MLA							
75SK8100PLA	1681	1044	350.3	973	65.2	41.4	38.8
Power requirement / Güç gereksinimi					AC 100-240 V ~ 50 / 60 Hz		



OWNER'S MANUAL

Safety and Reference

LED TV*

* LG LED TV applies LCD screen with LED backlights.

Please read this manual carefully before operating your set and retain it for future reference.



* M F L 7 0 3 1 9 8 0 8 *

(1803-REV01)


www.lg.com


Copyright © 2018 LG Electronics Inc.
All Rights Reserved.

Warning! Safety Instructions



CAUTION : TO REDUCE THE RISK OF ELECTRIC SHOCK, DO NOT REMOVE COVER (OR BACK). NO USER-SERVICEABLE PARTS INSIDE. REFER TO QUALIFIED SERVICE PERSONNEL.

 This symbol is intended to alert the user to the presence of uninsulated “dangerous voltage” within the product’s enclosure that may be of sufficient magnitude to constitute a risk of electric shock to persons.

 This symbol is intended to alert the user to the presence of important operating and maintenance (servicing) instructions in the literature accompanying the appliance.

WARNING : TO REDUCE THE RISK OF FIRE AND ELECTRIC SHOCK, DO NOT EXPOSE THIS PRODUCT TO RAIN OR MOISTURE.

- TO PREVENT THE SPREAD OF FIRE, KEEP CANDLES OR OTHER ITEMS WITH OPEN FLAMES AWAY FROM THIS PRODUCT AT ALL TIMES.

- **Do not place the TV and/or remote control in the following environments:**
 - Keep the product away from direct sunlight.
 - An area with high humidity such as a bathroom
 - Near any heat source such as stoves and other devices that produce heat.
 - Near kitchen counters or humidifiers where they can easily be exposed to steam or oil.
 - An area exposed to rain or wind.
 - Do not expose to dripping or splashing and do not place objects filled with liquids, such as vases, cups, etc. on or over the apparatus (e.g., on shelves above the unit).
 - Near flammable objects such as gasoline or candles, or expose the TV to direct air conditioning.
 - Do not install in excessively dusty places. Otherwise, this may result in fire, electric shock, combustion/explosion, malfunction or product deformation.

- **Ventilation**
 - Install your TV where there is proper ventilation. Do not install in a confined space such as a bookcase.
 - Do not install the product on a carpet or cushion.
 - Do not block or cover the product with cloth or other materials while unit is plugged in.
- Take care not to touch the ventilation openings. When watching the TV for a long period, the ventilation openings may become hot.
- Protect the power cord from physical or mechanical abuse, such as being twisted, kinked, pinched, closed in a door, or walked upon. Pay particular attention to plugs, wall outlets, and the point where the cord exits the device.
- Do not move the TV whilst the Power cord is plugged in.
- Do not use a damaged or loosely fitting power cord.
- Be sure do grasp the plug when unplugging the power cord. Do not pull on the power cord to unplug the TV.
- Do not connect too many devices to the same AC power outlet as this could result in fire or electric shock.
- **Disconnecting the Device from the Main Power**
 - The power plug is the disconnecting device. In case of an emergency, the power plug must remain readily accessible.
- Do not let your children climb or cling onto the TV. Otherwise, the TV may fall over, which may cause serious injury.
- **Outdoor Antenna Grounding** (Can differ by country):
 - If an outdoor antenna is installed, follow the precautions below.

An outdoor antenna system should not be located in the vicinity of overhead power lines or other electric light or power circuits, or where it can come in contact with such power lines or circuits as death or serious injury can occur.

Be sure the antenna system is grounded to provide some protection against voltage surges and built-up static charges.

Section 810 of the National Electrical Code (NEC) in the U.S.A. provides information with respect to proper grounding of the mast and supporting structure, grounding of the lead-in wire to an antenna discharge unit, size of grounding conductors, location of antenna discharge unit, connection to grounding electrodes and requirements for the grounding electrode.

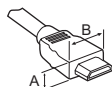
Antenna grounding according to the National Electrical Code, ANSI/NFPA 70

- **Grounding** (Except for devices which are not grounded.)
 - TV with a three-prong grounded AC plug must be connected to a three-prong grounded AC outlet. Ensure that you connect the earth ground wire to prevent possible electric shock.
- Never touch this apparatus or antenna during a lightning storm. You may be electrocuted.
- Make sure the power cord is connected securely to the TV and wall socket if not secured damage to the Plug and socket may occur and in extreme cases a fire may break out.
- Do not insert metallic or inflammable objects into the product. If a foreign object is dropped into the product, unplug the power cord and contact the customer service.
- Do not touch the end of the power cord while it is plugged in. You may be electrocuted.
- **If any of the following occur, unplug the product immediately and contact your local customer service.**
 - The product has been damaged.
 - If water or another substance enters the product (like an AC adapter, power cord, or TV).
 - If you smell smoke or other odors coming from the TV
 - When lightning storms or when unused for long periods of time.
Even the TV is turned off by remote control or button, AC power source is connected to the unit if not unplugged in.
- Do not use high voltage electrical equipment near the TV (e.g., a bug zapper). This may result in product malfunction.
- Do not attempt to modify this product in any way without written authorization from LG Electronics. Accidental fire or electric shock can occur. Contact your local customer service for service or repair. Unauthorized modification could void the user's authority to operate this product.

- Use only an authorized attachments / accessories approved by LG Electronics. Otherwise, this may result in fire, electric shock, malfunction, or product damage.
- Never disassemble the AC adapter or power cord. This may result in fire or electric shock.
- Handle the adapter carefully to avoid dropping or striking it. An impact could damage the adapter.
- To reduce the risk of fire or electrical shock, do not touch the TV with wet hands. If the power cord prongs are wet or covered with dust, dry the power plug completely or wipe dust off.
- **Batteries**
 - Store the accessories (battery, etc.) in a safe location out of the reach of children.
 - Do not short circuit, disassemble, or allow the batteries to overheat. Do not dispose of batteries in a fire. Batteries should not be exposed to excessive heat.
- **Moving**
 - When moving, make sure the product is turned off, unplugged, and all cables have been removed. It may take 2 or more people to carry larger TVs. Do not press or put stress on the front panel of the TV. Otherwise, this may result in product damage, fire hazard or injury.
 - Keep the packing anti-moisture material or vinyl packing out of the reach of children.
 - Do not allow an impact shock, any objects to fall into the product, and do not drop anything onto the screen.
 - Do not press strongly upon the panel with a hand or a sharp object such as a nail, pencil, or pen, or make a scratch on it. It may cause damage to screen.
- **Cleaning**
 - When cleaning, unplug the power cord and wipe gently with a soft/dry cloth. Do not spray water or other liquids directly on the TV. Do not clean your TV with chemicals including glass cleaner, any type of air freshener, insecticide, lubricants, wax (car, industrial), abrasive, thinner, benzene, alcohol etc., which can damage the product and/or its panel. Otherwise, this may result in electric shock or product damage.

Preparing

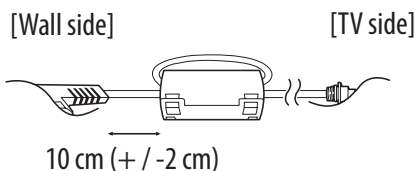
- If the TV is turned on for the first time after it was shipped from the factory, initialization of the TV may take a few minutes.
- Image shown may differ from your TV.
- Your TV's OSD (On Screen Display) may differ slightly from that shown in this manual.
- The available menus and options may differ from the input source or product model that you are using.
- New features may be added to this TV in the future.
- The device must be easily accessed to a location outlet near the access. Some devices are not made by turning on / off button, turning off the device and unplugging the power cord.
- The items supplied with your product may vary depending on the model.
- Product specifications or contents of this manual may be changed without prior notice due to upgrade of product functions.
- For an optimal connection, HDMI cables and USB devices should have bezels less than 10 mm thick and 18 mm width. Use an extension cable that supports USB 2.0 if the USB cable or USB memory stick does not fit into your TV's USB port.



*A ≤ 10 mm

*B ≤ 18 mm

- Use a certified cable with the HDMI logo attached.
- If you do not use a certified HDMI cable, the screen may not display or a connection error may occur. (Recommended HDMI Cable Types)
 - High-Speed HDMI[®]/TM cable (3 m or less)
 - High-Speed HDMI[®]/TM cable with Ethernet (3 m or less)
- How to use the ferrite core (Depending on model)
 - Use the ferrite core to reduce the electromagnetic interference in the power cord. Wind the power cord on the ferrite core once.



Separate Purchase

Separate purchase items can be changed or modified for quality improvement without any notification. Contact your dealer to buy these items. These devices only work with certain models.

The model name or design may be changed depending on the upgrade of product functions, manufacturer's circumstances or policies.

Magic Remote Control

(Depending on model)

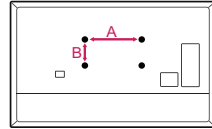
AN-MR18BA

Check whether your TV model supports Bluetooth in the Wireless Module Specification to verify whether it can be used with the Magic Remote.

Wall Mounting Bracket

(Depending on model)

Make sure to use screws and wall mount bracket that meet the VESA standard. Standard dimensions for the wall mount kits are described in the following table.



Model	49SK85* 49SK81* 49SK80* 49UK75* 43/50UK65* 43/50UK69* 43/50UK67* 43/50UK64* 43/50UK63* 32/43LK61* 49LK61* 32/43LK62* 49LK62* 43LK59* 43LK60* 43UK62*	55SK81* 55SK80* 55UK75* 55UK65* 55UK69* 55UK67* 49/55UK64* 49/55UK63* 49LK59* 49LK60* 49/55UK62*
VESA (A x B) (mm)	200 x 200	300 x 300
Standard screw	M6	M6
Number of screws	4	4
Wall mount bracket	LSW240B MSW240	OLW480B MSW240

Model	55/65SK95* 55/65SK85* 65SK81* 65SK80* 65UK75* 65UK65* 65UK69* 65UK67* 65UK64* 65UK63* 60UK62*	75SK81* 70/75UK65* 86UK65* 70/75UK67* 86UK67* 75UK62* 70UK69*
VESA (A x B) (mm)	300 x 300	600 x 400
Standard screw	M6	M8
Number of screws	4	4
Wall mount bracket	OLW480B	LSW640B

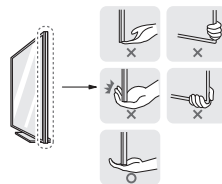
Lifting and moving the TV

Please note the following advice to prevent the TV from being scratched or damaged and for safe transportation regardless of its type and size.

- It is recommended to move the TV in the box or packing material that the TV originally came in.
- Before moving or lifting the TV, disconnect the power cord and all cables.
- When holding the TV, the screen should face away from you to avoid damage.



- Hold the top and bottom of the TV frame firmly. Make sure not to hold the transparent part, speaker, or speaker grill area.



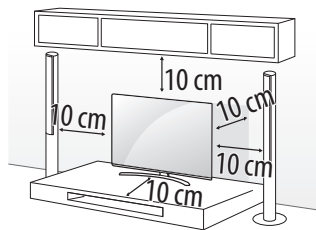
- When transporting a large TV, there should be at least 2 people.
- When transporting the TV by hand, hold the TV as shown in the following illustration.



- When transporting the TV, do not expose the TV to jolts or excessive vibration.
 - When transporting the TV, keep the TV upright, never turn the TV on its side or tilt towards the left or right.
 - Do not apply excessive pressure to cause flexing / bending of frame chassis as it may damage screen.
 - When handling the TV, be careful not to damage the protruding buttons.
- ⚠
- Avoid touching the screen at all times, as this may result in damage to the screen.
 - Do not move the TV by holding the cable holders, as the cable holders may break, and injuries and damage to the TV may occur.
 - When attaching the stand to the TV set, place the screen facing down on a cushioned table or flat surface to protect the screen from scratches.

Mounting on the Table

- 1 Lift and tilt the TV into its upright position on a table.
 - Leave a 10 cm (minimum) space from the wall for proper ventilation.



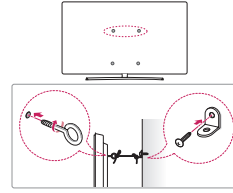
(Depending on model)

- 2 Connect the power cord to a wall outlet.



- Do not apply foreign substances (oils, lubricants, etc.) to the screw parts when assembling the product. (Doing so may damage the product.)
- If you install the TV on a stand, you need to take actions to prevent the product from overturning. Otherwise, the product may fall over, which may cause injury.
- Do not use any unapproved items to ensure the safety and product life span.
- Any damage or injuries caused by using unapproved items are not covered by the warranty.
- Make sure that the screws are inserted correctly and fastened securely. (If they are not fastened securely enough, the TV may tilt forward after being installed.) Do not use too much force and over tighten the screws; otherwise screw may be damaged and not tighten correctly.

Securing TV to the Wall



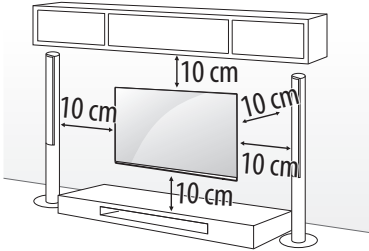
(Depending on model)

- 1 Insert and tighten the eye-bolts, or TV brackets and bolts on the back of the TV.
 - If there are bolts inserted at the eye-bolts position, remove the bolts first.
- 2 Mount the wall brackets with the bolts to the wall.

Match the location of the wall bracket and the eye-bolts on the rear of the TV.
- 3 Connect the eye-bolts and wall brackets tightly with a sturdy rope. Make sure to keep the rope horizontal with the flat surface.
 - Use a platform or cabinet that is strong and large enough to support the TV securely.
 - Brackets, bolts and ropes are not provided. You can obtain additional accessories from your local dealer.

Mounting to the Wall

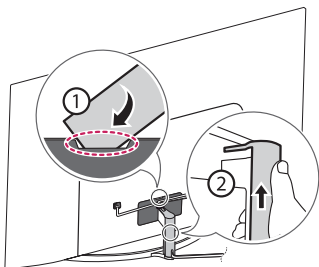
Attach an optional wall mount bracket at the rear of the TV carefully and install the wall mount bracket on a solid wall perpendicular to the floor. When you attach the TV to other building materials, please contact qualified personnel. LG recommends that wall mounting be performed by a qualified professional installer. We recommend the use of LG's wall mount bracket. LG's wall mount bracket is easy to move with cables connected. When you do not use LG's wall mount bracket, please use a wall mount bracket where the device is adequately secured to the wall with enough space to allow connectivity to external devices. It is advised to connect all the cables before installing fixed wall mounts.



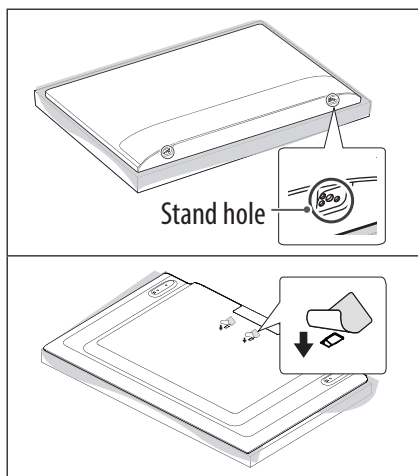
(Depending on model)



- Remove the stand before installing the TV on a wall mount by performing the stand attachment in reverse.
- For more information of screws and wall mount bracket, refer to the Separate purchase.
- If you intend to mount the product to a wall, attach VESA standard mounting interface (optional parts) to the back of the product. When you install the set to use the wall mounting bracket (optional parts), fix it carefully so as not to drop.
- When mounting a TV on the wall, make sure not to install the TV by hanging the power and signal cables on the back of the TV.
- Do not install this product on a wall if it could be exposed to oil or oil mist. This may damage the product and cause it to fall.



- Do not use a sharp object when you detached the cable cover. This could damage the cable or the cabinet. It may also cause personal harm. (Depending on model)
- When installing the wall mounting bracket, it is recommended to cover the stand hole using tape, in order to prevent the influx of dust and insects. (Depending on model)



Connections

Connect various external devices to the TV and switch input modes to select an external device. For more information of external device's connection, refer to the manual provided with each device.

Antenna/Cable

Connect the TV to a wall antenna socket with an RF cable (75 Ω).

- Use a signal splitter to use more than 2 TVs.
- If the image quality is poor, install a signal amplifier properly to improve the image quality.
- If the image quality is poor with an antenna connected, try to realign the antenna in the correct direction.
- An antenna cable and converter are not supplied.
- For a location that is not supported with ULTRA HD broadcasting, this TV cannot receive ULTRA HD broadcasts directly. (Depending on model)

Satellite dish

Connect the TV to a satellite dish to a satellite socket with a satellite RF cable (75 Ω).
(Depending on model)

CI module

View the encrypted (pay) services in digital TV mode. (Depending on model)

- Check if the CI module is inserted into the PCMCIA card slot in the right direction. If the module is not inserted properly, this can cause damage to the TV and the PCMCIA card slot.
- If the TV does not display any video and audio when CI+ CAM is connected, please contact to the Terrestrial/Cable/Satellite Service Operator.




Other connections

Connect your TV to external devices. For the best picture and audio quality, connect the external device and the TV with the HDMI cable. Some separate cable is not provided.

HDMI

- Supported HDMI Audio format :
(Depending on model)
DTS (44.1 kHz / 48 kHz / 88.2 kHz / 96 kHz),
DTS HD (44.1 kHz / 48 kHz / 88.2 kHz / 96 kHz / 176.4 kHz / 192 kHz),
True HD (48 kHz),
Dolby Digital / Dolby Digital Plus (32 kHz / 44.1 kHz / 48 kHz),
PCM (32 kHz / 44.1 kHz / 48 kHz / 96 kHz / 192 kHz)

(Only UHD models)

-  →  →  → **Picture**
→ **Additional Settings** →
HDMI ULTRA HD Deep Colour
 - On : Support 4K @ 50/60 Hz (4:4:4, 4:2:2, 4:2:0)
 - Off : Support 4K @ 50/60 Hz 8 bit (4:2:0)
- If the device connected to Input Port also supports ULTRA HD Deep Colour, your picture may be clearer. However, if the device doesn't support it, it may not work properly. In that case, change the TV's **HDMI ULTRA HD Deep Colour** setting to off.

USB

Some USB Hubs may not work. If a USB device connected using a USB Hub is not detected, connect it to the USB port on the TV directly.

External Devices

Available external devices are: Blu-ray player, HD receivers, DVD players, VCRs, audio systems, USB storage devices, PC, gaming devices, and other external devices.

- The external device connection may differ from the model.
- Connect external devices to the TV regardless of the order of the TV port.
- If you record a TV program on a Blu-ray/DVD recorder or VCR, make sure to connect the TV signal input cable to the TV through a DVD recorder or VCR. For more information of recording, refer to the manual provided with the connected device.
- Refer to the external equipment's manual for operating instructions.
- If you connect a gaming device to the TV, use the cable supplied with the gaming device.
- In PC mode, there may be noise associated with the resolution, vertical pattern, contrast or brightness. If noise is present, change the PC output to another resolution, change the refresh rate to another rate or adjust the brightness and contrast on the PICTURE menu until the picture is clear.
- In PC mode, some resolution settings may not work properly depending on the graphics card.
- If ULTRA HD content is played on your PC, video or audio may become disrupted intermittently depending on your PC's performance. (Depending on model)
- When connecting via a wired LAN, it is recommended to use a CAT 7 cable. (Only when **LAN** port is provided.)
- For LK series, HDR (High Dynamic Range) pictures can be viewed over the Internet or via USB and HDMI 1.4 compatible devices.

Remote RS-232C setup

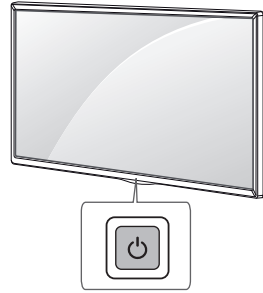
To obtain the RS-232C external control setup information, please visit www.lg.com. Download and read the manual. (Depending on model)



- Do not drop the product or let it fall over when connecting external devices. Otherwise, this may result in injury or damage to the product.
- When connecting external devices such as video game consoles, make sure the connecting cables are long enough. Otherwise, the product may fall over, which may cause injury or damage the product.

Using Button

You can simply operate the TV functions, using the button.




Basic functions







Power On (Press)
Power Off ¹ (Press and Hold)
Menu Control (Press ²)
Menu Selection (Press and Hold ³)

- 1 All running apps will close, and any recording in progress will stop. (Depending on country)
- 2 You can access and adjust the menu by pressing the button when TV is on.
- 3 You can use the function when you access menu control.

Adjusting the menu



When the TV is turned on, press the  button one time. You can adjust the Menu items using the button.

	Turns the power off.
	Changes the input source.
	Scrolls through the saved programmes.
	Adjusts the volume level.

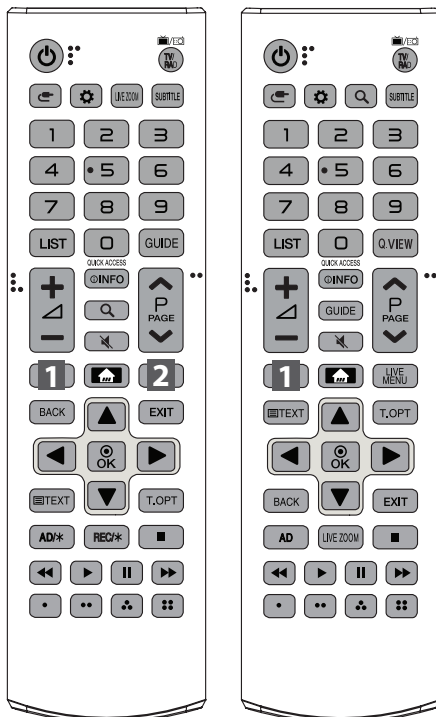
Using Remote Control

(Depending on model)

The descriptions in this manual are based on the buttons on the remote control. Please read this manual carefully and use the TV correctly.

To replace batteries, open the battery cover, replace batteries (1.5 V AAA) matching the  and  ends to the label inside the compartment, and close the battery cover. To remove the batteries, perform the installation actions in reverse.

Make sure to point the remote control toward the remote control sensor on the TV.




(Some buttons and services may not be provided depending on models or regions.)

* **To use the button, press and hold for more than 3 seconds.**

 **(POWER)** Turns the TV on or off.

TV/RAD  Selects Radio, TV and DTV programme.

 **(INPUT)** Changes the input source.

 **(Q. Settings)** Accesses the Quick Settings.

LIVE ZOOM By zooming in on the selected area, you can view it in full screen.

SUBTITLE Recalls your preferred subtitle in digital mode.

Number buttons Enters numbers.


LIST Accesses the saved programmes list.


GUIDE Shows programme guide.

Q.VIEW Returns to the previously viewed programme.


QUICK ACCESS* You can access apps or Live TV using the number buttons corresponding to the features.


 Adjusts the volume level.

 **INFO** Views the information of the current programme and screen.

 **(SEARCH)** Search for content such as TV programmes, movies and other videos, or perform a web search by entering text in the search bar.

 **(MUTE)** Mutes all sounds.


 *** (MUTE)** Accesses the **Accessibility** menu.

 **P**  Scrolls through the saved programmes.

 **PAGE**  Moves to the previous or next screen.

1, 2 Streaming Service buttons

Connects to the Video Streaming Service.

 **(HOME)** Accesses Home menu.

 *** (HOME)** Shows the previous history.


LIVE MENU Shows the list of Programmes and Recommended.

BACK Returns to the previous level.

EXIT Clears on-screen displays and returns to TV viewing.

Navigation buttons (up/down/left/right)

Scrolls through menus or options.

 **OK** Selects menus or options and confirms your input.

Teletext buttons (≡ TEXT, T.OPT) These buttons are used for teletext.

AD, AD/* Audio descriptions function will be enabled. (Depending on model)

REC/* Starts to record and displays record menu. (Only Time Machine^{Ready} supported model) (Depending on model)

Control buttons (■, ▶, II, ◀, ▶▶)

Controls media contents.

 These access special functions in some menus.

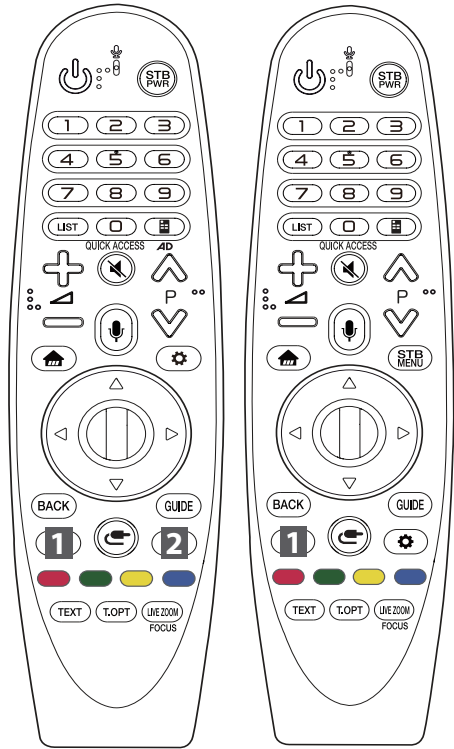
Using Magic Remote Control

(Depending on model)

The descriptions in this manual are based on the buttons on the remote control. Please read this manual carefully and use the TV correctly.

When the message “Magic Remote battery is low. Please change the battery.” is displayed, replace the battery.

To replace batteries, open the battery cover, replace batteries (1.5 V AA) matching the ⊕ and ⊖ ends to the label inside the compartment, and close the battery cover. Be sure to point the magic remote toward the remote control sensor on the TV. To remove the batteries, perform the installation actions in reverse.



(Some buttons and services may not be provided depending on models or regions.)

*** To use the button, press and hold for more than 3 seconds.**

 **(POWER)** Turns the TV on or off.

STB PWR You can turn your set-top box on or off by adding the set-top box to the universal remote control for your TV.

Number buttons Enters numbers.

LIST Accesses the saved programmes list.

 **(Screen Remote)** Displays the Screen Remote.


- Accesses the Universal Control Menu.

AD* Audio descriptions function will be enabled.

QUICK ACCESS* You can access apps or Live TV using the number buttons corresponding to the features.

 Adjusts the volume level.

 **(MUTE)** Mutes all sounds.

 *** (MUTE)** Accesses the **Accessibility** menu.

 **P** Scrolls through the saved programmes.

 *** (Voice recognition)**

Network connection is required to use the voice recognition function.


Once the voice display bar is activated on the TV screen, press and hold the button and speak your command out loud.


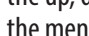
 **(HOME)** Accesses the Home menu.

 *** (HOME)** Shows the previous history.

STB MENU Displays the set-top box Home menu.

- When you are not watching via a set-top box: the display changes to the set-top box screen.

 **Wheel (OK)** Press the center of the Wheel button to select a menu. You can change programmes by using the wheel button.

 **(up/down/left/right)** Press the up, down, left or right button to scroll the menu. If you press  buttons while the pointer is in use, the pointer will disappear from the screen and Magic Remote will operate like a general remote control. To display the pointer on the screen again, shake Magic Remote to the left and right.

BACK Returns to the previous level.

BACK* Clears on-screen displays and returns to last input viewing.

GUIDE Shows programme guide.

1, 2 Streaming Service buttons

Connects to the Video Streaming Service.

 **(INPUT)** Changes the input source.

 *** (INPUT)** Displays a list of all the external inputs.

 **(Q. Settings)** Accesses the Quick Settings.

 *** (Q. Settings)** Displays the **All Settings** menu.

 These access special functions in some menus.

 *** (Red Button)** Runs the record function.

Teletext buttons (TEXT, T.OPT) These buttons are used for teletext.


LIVE ZOOM By zooming in on the selected area, you can view it in full screen.

FOCUS* You can zoom in on the area where the remote control is pointed.

Registering Magic Remote Control

How to register the Magic Remote Control

To use the Magic Remote, first pair it with your TV.

- 1 Put batteries into the Magic Remote and turn the TV on.
- 2 Point the Magic Remote at your TV and press the  **Wheel (OK)** on the remote control.

* If the TV fails to register the Magic Remote, try again after turning the TV off and back on.

How to deregister the Magic Remote Control

Press the **BACK** and  (**HOME**) buttons at the same time, for five seconds, to unpair the Magic Remote with your TV.

* Pressing and holding the **GUIDE** button will let you cancel and re-register Magic Remote at once.



- Do not mix new batteries with old batteries. This may cause the batteries to overheat and leak.
- Failure to match the correct polarities of the battery may cause the battery to burst or leak, resulting in fire, personal injury, or ambient pollution.
- This apparatus uses batteries. In your community there might be regulations that require you to dispose of these batteries properly due to environmental considerations. Please contact your local authorities for disposal or recycling information.
- Batteries inside or inside the product shall not be exposed to excessive heat such as sunshine, fire or the like.

Troubleshooting

Cannot control the TV with the remote control.

- Check the remote control sensor on the product and try again.
- Check if there is any obstacle between the product and the remote control.
- Check if the batteries are still working and properly installed (⊕ to ⊕, ⊖ to ⊖).

No image display and no sound is produced.

- Check if the product is turned on.
- Check if the power cord is connected to a wall outlet.
- Check if there is a problem in the wall outlet by connecting other products.

The TV turns off suddenly.

- Check the power control settings. The power supply may be interrupted.
- Check if the auto-off function is activated on the settings related time.
- If there is no signal while the TV is on, the TV will turn off automatically after 15 minutes of inactivity.

When connecting to the PC (HDMI), no signal is detected.

- Turn the TV off/on using the remote control.
- Reconnect the HDMI cable.
- Restart the PC with the TV on.

Abnormal Display

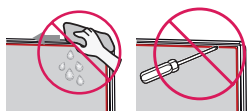
- If the product feels cold to the touch, there may be a small “flicker” when it is turned on. This is normal, there is nothing wrong with product.
- This panel is an advanced product that contains millions of pixels. You may see tiny black dots and/or brightly coloured dots (red, blue or green) at a size of 1 ppm on the panel. This does not indicate a malfunction and does not affect the performance and reliability of the product. This phenomenon also occurs in third-party products and is not subject to exchange or refund.
- You may find different brightness and color of the panel depending on your viewing position(left/right/top/down). This phenomenon occurs due to the characteristic of the panel. It is not related with the product performance, and it is not malfunction.
- Displaying a still image for a prolonged period of time may cause image sticking. Avoid displaying a fixed image on the TV screen for a long period of time.

Generated Sound

- “Cracking” noise: A cracking noise that occurs when watching or turning off the TV is generated by plastic thermal contraction due to temperature and humidity. This noise is common for products where thermal deformation is required.
- Electrical circuit humming/panel buzzing: A low level noise is generated from a high-speed switching circuit, which supplies a large amount of current to operate a product. It varies depending on the product. This generated sound does not affect the performance and reliability of the product.



- When cleaning the product, be careful not to allow any liquid or foreign objects to enter the gap between the upper, left or right side of the panel and the guide panel. (Depending on model)



- Make sure to wring any excess water or cleaner from the cloth.
- Do not spray water or cleaner directly onto the TV screen.
- Make sure to spray just enough of water or cleaner onto a dry cloth to wipe the screen.

Specifications

(Depending on country)

Broadcasting Specifications				
	Digital TV			Analogue TV
Television system	DVB-S/S2 ¹ DVB-C DVB-T DVB-T2 ¹			PAL/SECAM B/G, D/K, I SECAM L
Channel coverage (Band)	DVB-S/S2	DVB-C	DVB-T/T2	46 ~ 862 MHz
	950 ~ 2,150 MHz	46 ~ 890 MHz	VHF III : 174 ~ 230 MHz UHF IV : 470 ~ 606 MHz UHFV : 606 ~ 862 MHz S Band II : 230 ~ 300 MHz S Band III : 300 ~ 470 MHz	
Maximum number of storable programmes	6,000	3,000		
External antenna impedance	75 Ω			
CI Module (W x H x D)	100.0 mm x 55.0 mm x 5.0 mm			

¹ Depending on country

(Only LK59*, LK60*, LK61*A, 32LK615*)

Wireless module(LGSWFAC71)Specifications

Wireless LAN (IEEE 802.11a/b/g/n/ac)

Frequency Range	Output Power (Max.)
2,400 to 2,483.5 MHz	13 dBm
5,150 to 5,725 MHz	16.5 dBm
5,725 to 5,850 MHz (Not for EU)	10 dBm

As band channels can vary per country, the user cannot change or adjust the operating frequency. This product is configured for the regional frequency table.

For consideration of the user, this device should be installed and operated with a minimum distance of 20 cm between the device and the body.

"IEEE 802.11ac" is not available in all countries.

(Except for LK59*, LK60*, LK61*A, 32LK615*)

Wireless module (LGSBWAC72) specifications

Wireless LAN (IEEE 802.11a/b/g/n/ac)

Frequency Range	Output Power (Max.)
2,400 to 2,483.5 MHz	14 dBm
5,150 to 5,725 MHz	16.5 dBm
5,725 to 5,850 MHz (Not for EU)	11.5 dBm

Bluetooth

Frequency Range	Output Power (Max.)
2,400 to 2,483.5 MHz	8.5 dBm

As band channels can vary per country, the user cannot change or adjust the operating frequency. This product is configured for the regional frequency table.

For consideration of the user, this device should be installed and operated with a minimum distance of 20 cm between the device and the body.

"IEEE 802.11ac" is not available in all countries.

Environment condition

Operating Temperature	0 °C to 40 °C
Operating Humidity	Less than 80 %
Storage Temperature	-20 °C to 60 °C
Storage Humidity	Less than 85 %

Open Source Software Notice Information

To obtain the source code under GPL, LGPL, MPL, and other open source licenses, that is contained in this product, please visit <http://opensource.lge.com>.

In addition to the source code, all referred license terms, warranty disclaimers and copyright notices are available for download.

LG Electronics will also provide open source code to you on CD-ROM for a charge covering the cost of performing such distribution (such as the cost of media, shipping, and handling) upon email request to opensource@lge.com.

This offer is valid for a period of three years after our last shipment of this product. This offer is valid to anyone in receipt of this information.

Licenses

Supported licenses may differ by model.





Record the model number and serial number of the TV.

Refer to the label on the back cover and quote this information to your dealer when requiring any service.

Model _____

Serial No. _____

İTHALATÇI FİRMA

LG ELECTRONICS TİCARET A.Ş.

Kaptanpaşa Mah. Piyalepaşa Bulvarı No : 73 Ortadoğu Plaza Kat : 7 34384 Okmeydanı

Şişli - İstanbul - Turkey

Tel : (0 212) 314 52 52

Fax : (0 212) 222 61 44

ÜRETİCİ FİRMA

LG Electronics Inc. LG Twin Towers 128 Yeoui-daero Youngdungpo-gu Seoul 150-721 Korea

Tel : 82-2-3777-1114

FABRİKA ADRESİ

LG Electronics Mlawa Sp. z o.o. (Ltd.)

LG Electronics 7 street

06-500 Mlawa, Poland

Tel. : +48 23 654 74 17

Fax : +48 23 654 59 47

LG Electronics Wrocław Sp. z o.o

Ul. LG Electronics 1-2

Biskupice Podgorne

55-040 Kobierzyce, Poland

Tel : +48 71 79 29 400

Fax : +48 71 79 29 405

LG Electronics Inc.

77, Sanho-daero, Gumi-si, Gyeongsangbuk-do, 39381, Rep. of KOREA

Tel : +82-54-460-7114

Fax : +82-54-460-7930

TV'nin model ve seri numarasını kaydedin.

Arka kapaktaki etikete bakın ve servis gerektiğinde bayinize bu bilgileri iletin.

Model _____

Seri No. _____

ÜRETİCİ FİRMA

LG ELECTRONICS TİCARET A.Ş.

Kaptanpaşa Mah. Piyalepaşa Bulvarı No : 73 Ortadoğu Plaza Kat : 7 34384 Okmeydanı

Şişli - İstanbul - Turkey

Tel : (+90) 212 314 52 52

Fax : (+90) 212 222 61 44

FABRİKA ADRESİ

Cumhuriyet Mah. E-5 Yanyol No : 1 34520 Beylikdüzü - İstanbul - Turkey

Tel : (+90) 212 872 20 00

Fax : (+90) 212 872 20 13

TV'nin model ve seri numarasını kaydedin.

Arka kapaktaki etikete bakın ve servis gerektiğinde bayinize bu bilgileri iletin.

Model _____

Seri No. _____



KULLANICI KILAVUZU

HARİCİ KONTROL CİHAZ KURULUMU

Lütfen seti çalıştırmadan önce bu kılavuzu dikkatle okuyun ve ileride başvurmak üzere saklayın.

TUŞ KODLARI

- Bu özellik her modelde mevcut değildir.

Kod (Onaltılık)	Fonksiyon	Not	Kod (Onaltılık)	Fonksiyon	Not
00	CH +, PR + (Kanal +, Program +)	Uzaktan Kumanda Düğmesi	53	Liste	Uzaktan Kumanda Düğmesi
01	CH -, PR - (Kanal -, Program -)	Uzaktan Kumanda Düğmesi	5B	Çıkış	Uzaktan Kumanda Düğmesi
02	Ses +	Uzaktan Kumanda Düğmesi	60	PIP(AD)	Uzaktan Kumanda Düğmesi
03	Ses -	Uzaktan Kumanda Düğmesi	61	Mavi	Uzaktan Kumanda Düğmesi
06	> (Ok Tuşu / Sağ Tuş)	Uzaktan Kumanda Düğmesi	63	Sarı	Uzaktan Kumanda Düğmesi
07	< (Ok Tuşu / Sol Tuş)	Uzaktan Kumanda Düğmesi	71	Yeşil	Uzaktan Kumanda Düğmesi
08	Güç	Uzaktan Kumanda Düğmesi	72	Kırmızı	Uzaktan Kumanda Düğmesi
09	Sessiz	Uzaktan Kumanda Düğmesi	79	Oran / İzleme Oranı	Uzaktan Kumanda Düğmesi
0B	Giriş	Uzaktan Kumanda Düğmesi	91	AD (Ses Tanımı)	Uzaktan Kumanda Düğmesi
0E	SLEEP	Uzaktan Kumanda Düğmesi	9E	LIVE MENU	Uzaktan Kumanda Düğmesi
0F	TV, TV/RAD	Uzaktan Kumanda Düğmesi	7A	Kullanıcı Kılavuzu	Uzaktan Kumanda Düğmesi
10 - 19	* Sayı Tuşu 0 - 9	Uzaktan Kumanda Düğmesi	7C	Smart / Ev	Uzaktan Kumanda Düğmesi
1A	Q.View / Geriye Dönüş	Uzaktan Kumanda Düğmesi	7E	SIMPLINK	Uzaktan Kumanda Düğmesi
1E	FAV (Favori Kanal)	Uzaktan Kumanda Düğmesi	8E	▶▶ (İleri)	Uzaktan Kumanda Düğmesi
20	Text (Teletext)	Uzaktan Kumanda Düğmesi	8F	◀◀ (Geri Sar)	Uzaktan Kumanda Düğmesi
21	T. Opt (Teletext Opsiyonu)	Uzaktan Kumanda Düğmesi	AA	Bilgi	Uzaktan Kumanda Düğmesi
28	Geri Dön (GERI)	Uzaktan Kumanda Düğmesi	AB	Program Rehberi	Uzaktan Kumanda Düğmesi
30	AV (Ses / Video) Modu	Uzaktan Kumanda Düğmesi	B0	▶ (Oynat)	Uzaktan Kumanda Düğmesi
39	Altyazı	Uzaktan Kumanda Düğmesi	B1	■ (Durdur / Dosya Listesi)	Uzaktan Kumanda Düğmesi
40	∧ (Ok Tuşu / İmleç Yukarı)	Uzaktan Kumanda Düğmesi	B5	RECENT	Uzaktan Kumanda Düğmesi
41	V (Ok Tuşu / İmleç Aşağı)	Uzaktan Kumanda Düğmesi	BA	(Dondur / Yavaş Oynat / Duraklat)	Uzaktan Kumanda Düğmesi
42	Uygulamalarım	Uzaktan Kumanda Düğmesi	BB	Futbol	Uzaktan Kumanda Düğmesi
43	Menü / Ayarlar	Uzaktan Kumanda Düğmesi	BD	● (KAYIT)	Uzaktan Kumanda Düğmesi
44	OK / Enter	Uzaktan Kumanda Düğmesi	DC	3D	Uzaktan Kumanda Düğmesi
45	Q.Menu	Uzaktan Kumanda Düğmesi	99	Otomatik Yapılandırma	Uzaktan Kumanda Düğmesi
4C	Liste, - (Sadece ATSC)	Uzaktan Kumanda Düğmesi	9F	Uygulama / *	Uzaktan Kumanda Düğmesi
4D	PICTURE	Uzaktan Kumanda Düğmesi	9B	TV/PC	Uzaktan Kumanda Düğmesi
52	SOUND	Uzaktan Kumanda Düğmesi			

* Büyük/küçük kanal kullanan ATSC/ISDB modellerde tuş kodu 4C (0x4C) mevcuttur.(Güney Kore, Japonya, Kuzey Amerika ve Kolombiya haricindeki Latin Amerika modelleri için)

HARİCİ KONTROL CİHAZI KURULUMU

- Gösterilen resim sizin TV'nizden farklı olabilir.

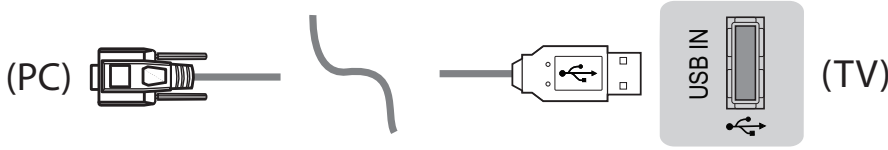
USB-Seri dönüştürücü/RS-232C giriş jakını harici bir kontrol cihazına (örneğin bir bilgisayara ya da A/V kontrol sistemine) bağlayarak ürün fonksiyonlarını dışarıdan kontrol edebilirsiniz.

Not: TV üzerindeki kontrol bağlantı noktası türü, model serisine bağlı olarak değişebilir.

- * Lütfen tüm modellerin bu bağlantı türünü desteklemeyeceğini unutmayın.
- * Kablo birlikte verilmez.

USB-Seri Dönüştürücü ve USB Kablosu

USB Tipi



- LGTV, LG tarafından üretilmeyen ve sağlanmayan PL2303 çip tabanlı (Satıcı Kimliği: 0x0557, Ürün Kimliği: 0x2008) USB-Seri dönüştürücüyü destekler.
- Bu ürün, IT destek uzmanları için aksesuarlar satan bilgisayar mağazalarından satın alınabilir.

RS-232C ve RS232C Kablosu

DE9 (D-Sub 9pin) Tipi

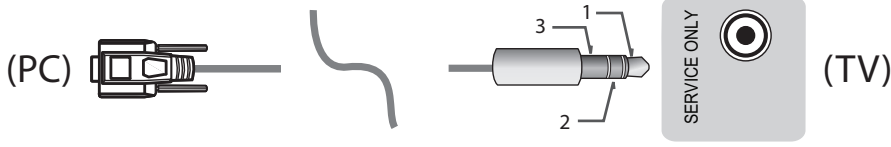
- PC ve TV arasındaki bağlantı için gerekli olan, kılavuzda belirtilen RS-232C (DE9, D-Sub 9pin dişiden dişeye tipi) - RS-232C kablosunu satın almanız gerekir.



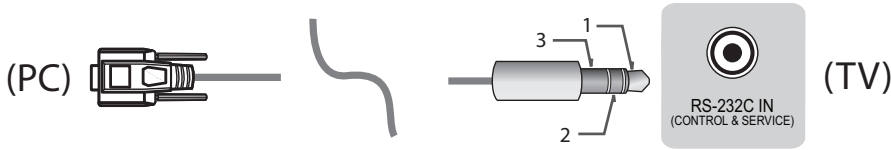
Bağlantı arayüzü TV'nizden farklı olabilir.

Telefon Jak Tipi

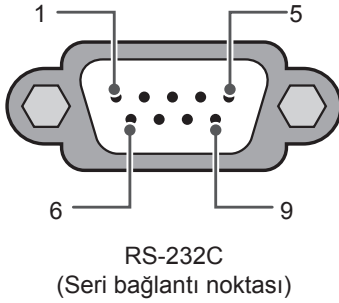
- PC ile TV arasındaki bağlantıyı sağlamak için telefon jaki - RS-232 kablosunu satın almanız gerekir.
- * Diğer modelleri USB bağlantı noktasına bağlayın.
- * Bağlantı arayüzü TV'nizden farklı olabilir.



- veya



Müşteri Bilgisayarı



RS-232C yapılandırmaları

3 Kablolu Yapılandırmalar (Standart değil)

	PC	TV	
RXD	2	2	TXD
TXD	3	1	RXD
GND	5	3	GND
VEYA			
RXD	3	2	TXD
TXD	2	1	RXD
GND	5	3	GND
	D-Sub 9	Telefon	

Set ID

Set ID numarası için bkz. "Gerçek Veri Eşleme", sayfa 6.

1. Ana menülere erişmek için **AYARLAR** düğmesine basın.
2. Gezinme düğmelerine basarak (*Genel → Bu TV Hakkında veya OPSİYON) öğesine gidin ve **OK** düğmesine basın.
3. Gezinme düğmelerine basarak **Kimliği Ayarla** öğesine gidin ve **OK** düğmesine basın.
4. Kimlik numarası ayarlamak için sola ya da sağa ilerleyin ve **KAPAT** öğesini seçin. Ayar aralığı 1-99 arasındadır.
5. İşleminiz sona erdiğinde **ÇIKIŞ** düğmesine basın.
* (Modele bağlı olarak değişkenlik gösterebilir)

İletişim Parametreleri

- Baud hızı: 9600 bps (UART)
- Veri uzunluğu: 8 bit
- Eşlik: Yok
- Durdurma biti : 1 bit
- İletişim kodu : ASCII kodu
- Çapraz bağlı (ters) kablo kullanın.

Komut referans listesi

(Modele bağlı olarak değişkenlik gösterebilir)

	COMMAND1	COMMAND2	Veri (Onaltılık)		COMMAND1	COMMAND2	Veri (Onaltılık)
01. Güç*	k	a	00 ila 01	15. Denge	k	t	00 ila 64
02. İzleme Oranı	k	c	(s.7)	16. Renk (Renk) Sıcaklığı	x	u	00 ila 64
03. Ekran karartma	k	d	(s.7)	17. ISM Metodu (Yalnızca Plazma TV)	j	p	(s.8)
04. Sessiz	k	e	00 ila 01	18. Ekolayzır	j	v	(s.8)
05. Ses Seviyesi Kontrolü	k	f	00 ila 64	19. Enerji Tasarrufu	j	q	00 ila 05
06. Kontrast	k	g	00 ila 64	20. Ayar Komutu	m	a	(s.9)
07. Parlaklık	k	h	00 ila 64	21. Kanal (Program) Ekle/Sil (Atla)	m	b	00 ila 01
08. Renk/ Renk	k	i	00 ila 64	22. Tuş	m	c	TUŞ KODLARI
09. Ton	k	j	00 ila 64	23. Arka Işık Kontrolü, Kontrol Paneli Işığı	m	g	00 ila 64
10. Keskinlik	k	k	00 ila 32	24. Giriş seçimi (Ana)	x	b	(s.11)
11. OSD Seç	k	l	00 ila 01	25. 3D (Yalnızca 3D modeller)	x	t	(s.11)
12. Uzaktan Kumanda Kilit Modu	k	m	00 ila 01	26. Gelişmiş 3D (Yalnızca 3D modeller)	x	v	(s.11)
13. Tiz	k	r	00 ila 64	27. Otomatik Yapılandırma	j	u	(s.12)
14. Bass	k	s	00 ila 64				

* Not: Medya oynatma veya medya kaydetme sırasında Güç (Komut: ka) ve Tuş (Komut: mc) dışındaki hiçbir komut çalıştırılmaz ve NG (İyi Değil) olarak kabul edilir. RS232C kablosu sayesinde TV, güç açık ve güç kapalı durumlarında "ka komutu" gönderebilir. Ancak USB'den Seri'ye dönüştürücü kabloyla komut yalnızca TV açıkken çalışır.

İletim / Alım Protokolü

Transmission

[Command1][Command2][][Set ID][][Data][Cr]

[Command 1] : TV'yi kontrol etmek için ilk komut. (j, k, m veya x)

[Command 2] : TV'yi kontrol etmek için ikinci komut.

[Set ID] : Seçim menüsünde, istenen monitör kimlik numarasını seçmek üzere [Set ID] komutunu ayarlayabilirsiniz. Ayar aralığı 1-99'dur. [Set ID] değeri '0' olarak seçilmişse tüm bağlı setler kontrol edilebilir.

* [Set ID], menüde onluk sistemle (1 – 99), iletim/alım protokolünde ise onaltılık sistemle (0x00 – 0x63) gösterilir.

[DATA] : Komut verilerini göndermek içindir (onaltılık). Komut durumunu okumak için "FF" verisini gönderin.

[Cr] : Satırbaşı Yapma - ASCII kodu '0x0D'

[] : Boşluk – ASCII kodu '0x20'

Tamam Alındı Bildirimi

[Command2][][Set ID][][OK][Data][x]

* Set normal veri alırken bu formatta ACK (alındı bildirimi) gönderir. Bu sırada veri, veri okuma modundaydı mevcut durum verilerini gösterir. Veri, veri yazma modundaydı PC'nin verilerini geri döndürür.

Hata Alındı Bildirimi

[Command2][][Set ID][][NG][Data][x]

* Cihaz uygulanamaz fonksiyonlara veya iletişim hatalarına ilişkin olağandışı veriler alırken bu formatta ACK (alındı bildirimi) gönderir.

Data 00: Geçersiz Kod

Gerçek veri eşleme (Onaltılık → Ondalık)

* Onaltılıklı [data] (veri) girişi yaparken aşağıdaki dönüştürme tablosunu kullanın.

* Kanal Ayar (ma) Komutu, kanal numarasını seçmek için iki bayt boyutunda onaltılık bir değer [data] (veri) kullanır.

00 : Adım 0	32 : Adım 50 (Set ID 50)	FE : Adım 254
01 : Adım 1 (Set ID 1)	33 : Adım 51 (Set ID 51)	FF : Adım 255
...
0A : Adım 10 (Set ID 10)	63 : Adım 99 (Set ID 99)	01 00 : Adım 256
...
0F : Adım 15 (Set ID 15)	C7 : Adım 199	27 0E : Adım 9998
10 : Adım 16 (Set ID 16)	C8 : Adım 200	27 0F : Adım 9999
...

* Modele ve sinyale bağlı olarak komutlar farklı çalışabilir.

01. Güç (Command: k a)

- Setin Güç *Açık veya Kapalı konumunu kontrol etmek için.

Transmission[k][a][][Set ID][][Data][Cr]

Veri 00 : Güç Kapalı 01 : *Güç Açık

Ack [a][][Set ID][][OK/NG][Data][x]

- TV'nin Güç Açık veya *Kapalı konumunu göstermek için.

Transmission [k][a][][Set ID][][FF][Cr]

Ack [a][][Set ID][][OK][Data][x]

- * Benzer şekilde diğer işlevler bu formatta 'FF' verisi gönderirse Alındı Bildirimi geri beslemesi, her bir işlevle ilgili durumu belirtir.

02. İzleme Oranı (Command: k c) (Ana Resim Boyutu)

- Ekran formatını ayarlamak için. (Ana görüntü formatı)Ekran formatını Q.MENU veya PICTURE menüsündeki İzleme Oranı öğesini kullanarak da ayarlayabilirsiniz.

Transmission [k][c][][Set ID][][Data][Cr]

Veri 01 : Normal ekran (4:3)	07 : 14:9 (Avrupa, Kolombiya, Orta Doğu,
02 : Geniş ekran (16:9)	Güney Kore ve Japonya hariç Asya)
04 : Yakınlaştırma	09 : * Sadece Tarayın
05 : Yakınlaştırma 2 (Yalnızca Kolombiya hariç Latin Amerika)	0B : Tam Geniş (Avrupa, Kolombiya, Orta Doğu, Güney Kore ve Japonya hariç Asya)
06 : Program Tarafından	10 - 1F : Sinema
Ayarlı/Orijinal	Yakınlaştırma 1 - 16

Ack [c][][Set ID][][OK/NG][Data][x]

- * PC girişini kullanarak 16:9 ya da 4:3 ekran izleme oranını seçebilirsiniz.
- * Sadece Tara, DTV/HDMI/Komponent modunda (yüksek çözünürlüklü) kullanılabilir.
- * Tam geniş modu modele bağlı olarak farklı şekilde çalışabilir ve DTV tarafından tamamen, ATV ve AV tarafından kısmen desteklenir.

03. Screen Mute (Ekran Karartma) (Command: k d)

- Ekran karartmayı açık/kapalı olarak seçmek için.

Transmission [k][d][][Set ID][][Data][Cr]

Veri 00 : Ekran karartma kapalı (Resim açık)
Video karartma kapalı
01 : Ekran karartma açık (Resim kapalı)
10 : Video karartma açık

Ack [d][][Set ID][][OK/NG][Data][x]

- * Yalnızca video karartma açık durumdayken TV, Ekran Üstü Gösterim (OSD) menüsünü görüntüler. Ancak Ekran karartma açık durumdayken TV, OSD menüsünü görüntülemez.

04. Volume Mute (Sessiz) (Command: k e)

- Ses kapatma özelliğinin açık/kapalı olmasını kontrol etmek için.Ses kapatma ayarını uzaktan kumandadaki MUTE düğmesiyle de yapabilirsiniz.

Transmission [k][e][][Set ID][][Data][Cr]

Veri 00 : Sessiz Açık (Ses kapalı)
01 : Ses Kapalı (Ses açık)

Ack [e][][Set ID][][OK/NG][Data][x]

05. Volume Control (Ses Seviyesi Kontrolü) (Command: k f)

- Ses seviyesini ayarlamak için. Ses seviyesini uzaktan kumandadaki ses düğmeleriyle de ayarlayabilirsiniz.

Transmission [k][f][][Set ID][][Data][Cr]

Veri Minimum : 00 - Maksimum : 64

Ack [f][][Set ID][][OK/NG][Data][x]

06. Kontrast (Command: k g)

- Ekran kontrastını ayarlamak için. Kontrastı PICTURE menüsünden de ayarlayabilirsiniz.

Transmission [k][g][][Set ID][][Data][Cr]

Veri Minimum : 00 - Maksimum : 64

Ack [g][][Set ID][][OK/NG][Data][x]

07. Parlaklık (Command: k h)

- Ekran parlaklığını ayarlamak için. Parlaklığı PICTURE menüsünden de ayarlayabilirsiniz.

Transmission [k][h][][Set ID][][Data][Cr]

Veri Minimum : 00 - Maksimum : 64

Ack [h][][Set ID][][OK/NG][Data][x]

08. Renk (Command: k i)

- TEkran rengini ayarlamak için. Rengi RESİM menüsünden de ayarlayabilirsiniz.

Transmission [k][i][][Set ID][][Data][Cr]

Veri Minimum : 00 - Maksimum : 64

Ack [i][][Set ID][][OK/NG][Data][x]

09. Ton (Command: k j)

- Ekran tonunu ayarlamak için.
Ekran tonunu PICTURE menüsünden de ayarlayabilirsiniz.

Transmission [k][j][][Set ID][][Data][Cr]

Veri Kırmızı : 00 - Yeşil : 64

Ack [j][][Set ID][][OK/NG][Data][x]

10. Keskinlik (Command: k k)

- Ekran keskinliğini ayarlamak için.
Ekran keskinliğini PICTURE menüsünden de ayarlayabilirsiniz.

Transmission [k][k][][Set ID][][Data][Cr]

Veri Minimum : 00 - Maksimum : 32

Ack [k][][Set ID][][OK/NG][Data][x]

11. OSD Seçimi (Command: k l)

- Uzaktan kumanda ederken OSD (Ekran Üstü Gösterim) Açık/Kapalı seçimi için.

Transmission [k][l][][Set ID][][Data][Cr]

Veri 00 : OSD kapalı 01 : OSD açık

Ack [l][][Set ID][][OK/NG][Data][x]

12. Uzaktan kumanda kilit modu (Command: k m)

- Monitör ve uzaktan kumandadaki ön panel kontrollerini kilitlemek için.

Transmission [k][m][][Set ID][][Data][Cr]

Veri 00 : Kilit kapalı 01: Kilit açık

Ack [m][][Set ID][][OK/NG][Data][x]

- * Uzaktan kumandayı kullanmıyorsanız bu modu kullanın. Ana güç açık/kapalı olarak ayarlandığında (fiş çıkarıldığında ve takıldığında, 20 - 30 saniye sonra) harici kontrol kilidi etkisiz hale gelir.

- * Bekleme modunda (kapatma zamanlayıcısı veya 'ka', 'mc' komutu ile DC gücü kapatıldığında) tuş kilidi açıksa TV, IR ve Yerel Tuş'un açma tuşuyla açılmaz.

13. Treble (Tiz) (Command: k r)

- Tizi ayarlamak için.
Tizi, SES menüsünden de ayarlayabilirsiniz.

Transmission [k][r][][Set ID][][Data][Cr]

Veri Minimum : 00 - Maksimum : 64

Ack [r][][Set ID][][OK/NG][Data][x]

* (Modele bağlı olarak değişkenlik gösterebilir)

14. Bas (Command: k s)

- Bası ayarlamak için.
Bası, SES menüsünden de ayarlayabilirsiniz.

Transmission [k][s][][Set ID][][Data][Cr]

Veri Minimum : 00 - Maksimum : 64

Ack [s][][Set ID][][OK/NG][Data][x]

* (Modele bağlı olarak değişkenlik gösterebilir)

15. Denge (Command: : k t)

- Dengeyi ayarlamak için.
Dengeyi, AUDIO menüsünden de ayarlayabilirsiniz.

Transmission [k][t][][Set ID][][Data][Cr]

Veri Minimum : 00 - Maksimum : 64

Ack [t][][Set ID][][OK/NG][Data][x]

16. Renk Sıcaklığı (Command: x u)

- Renk sıcaklığını ayarlamak için.
Renk sıcaklığını PICTURE menüsünden de ayarlayabilirsiniz.

Transmission [x][u][][Set ID][][Data][Cr]

Veri Minimum : 00 - Maksimum : 64

Ack [u][][Set ID][][OK/NG][Data][x]

17. ISM Metodu (Command: j p) (Yalnızca Plazma TV)

- ISM metodunu kontrol etmek için. ISM Metodunu OPTION menüsünden de ayarlayabilirsiniz.

Transmission [j][p][][Set ID][][Data][Cr]

Veri Minimum : 02: Orbiter

08: Normal

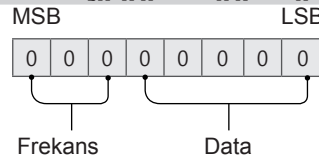
20: Renkli Yıkama

Ack [p][][Set ID][][OK/NG][Data][x]

18. Ekolayzır (Command : j v)

- Setin ekolayzırını ayarlamak için.

Transmission [j][v][][Set ID][][Data][Cr]



7	6	5	Frekans	4	3	2	1	0	Adım
0	0	0	1. Bant	0	0	0	0	0	0(ondalık)
0	0	1	2. Bant	0	0	0	0	1	1(ondalık)
0	1	0	3. Bant
0	1	1	4. Bant	1	0	0	1	1	19(ondalık)

1	0	0	5. Bant	1	0	1	0	0	20(ondalık)
---	---	---	---------	---	---	---	---	---	-------------

Acknowledgement [v][][Set ID][][OK/NG][Data][x]

- * Modele bağlıdır, ses modu ayarlanabilir EQ değerindeyse ayarlama yapabilir.

19. Enerji Tasarrufu (Command: j q)

- ▶ TV'nin güç tüketimini azaltmak içindir. Güç Tasarrufunu PICTURE menüsünden de ayarlayabilirsiniz.

Transmission [j][q][][Set ID][][Data][Cr]

Veri

- 00 : Kapalı
- 01 : Minimum
- 02 : Orta
- 03 : Maksimum
- 04 : Otomatik (LCD TV/LED TV için) / Akıllı sensör (PDP TV için)
- 05 : Ekran kapalı

- * (Modele bağlı olarak değişkenlik gösterebilir)

Ack [q][][Set ID][][OK/NG][Data][x]

20. Ayar Komutu (Command: m a)

- * Bu komut modele ve sinyale bağlı olarak farklı çalışabilir.
- Avrupa, Orta Doğu, Kolombiya, Güney Kore ve Japonya hariç Asya Modeli için
- ▶ Kanalı aşağıdaki fiziksel numaralardan birine ayarlayın.

Transmission [m][a][][Set ID][][Data 00][][Data 01][][Data 02][Cr]

- * Analog Anten/Kablo

[Data 00][Data 01] Kanal Verisi

- Veri 00 : Yüksek baytlı kanal verisi
- Veri 01 : Düşük baytlı kanal verisi
- 00 00 ~ 00 C7 (Ondalık: 0 ~ 199)

- Veri 02 : Giriş Kaynağı (Analog)
- 00 : Anten TV (ATV)
- 80 : Kablo TV (CATV)

- * Dijital Anten/Kablo/Uydu

[Data 00][Data 01]: Kanal Verisi

- Veri 00 : Yüksek Kanal verisi
- Veri 01 : Düşük Kanal verisi
- 00 00 ~ 27 0F (Ondalık: 0 ~ 9999)

- Veri 02 : Giriş Kaynağı (Dijital)
- 10 : Anten TV (DTV)
- 20 : Anten Radyo (Radyo)
- 40 : Uydu TV (SDTV)
- 50 : Uydu Radyo (S-Radio)
- 90 : Kablo TV (CADTV)
- a0 : Kablo Radyo (CA-Radio)

- * Ayar Komutu Örnekleri:

1. Analog anten (PAL) Kanal 10'a ayarlayın.

Set ID = Tümü = 00

Veri 00 & 01 = Kanal Verisi 10 = 00 0a

Veri 02 = Analog Anten TV = 00

Sonuç = **ma 00 00 0a 00**

2. Dijital anten (DVB-T) Kanal 01'e ayarlayın.

Set ID = Tümü = 00

Veri 00 & 01 = Kanal Verisi 1 = 00 01

Veri 02 = Dijital Anten TV = 10

Sonuç = **ma 00 00 01 10**

3. Uydu (DVB-S) Kanal 1000'e ayarlayın.

Set ID = Tümü = 00

Veri 00 & 01 = Kanal Verisi 1000 = 03 E8

Veri 02 = Dijital Uydu TV = 40

Sonuç = **ma 00 03 E8 40**

Ack [a][][Set ID][][OK][Data 00][Data 01]

[Data 02][x][a][][Set ID][][NG][Data 00][x]

- Güney Kore, Kolombiya hariç Kuzey/Latin Amerika Modeli için
- ▶ Kanalı aşağıdaki fiziksel/büyük/küçük numaraya ayarlamak için.

Transmission [m][a][][0][][Data00][][Data01]

[][Data02][][Data03][][Data04][][Data05][Cr]

Dijital kanalların Fiziksel, Büyük ve Küçük kanal numaraları bulunur. Fiziksel numara dijital kanalın asıl numarasıdır, Büyük numara kanalın eşlenmesi gereken numaredir. Küçük numara ise alt kanal numarasıdır. ATSC tuner kanalı Büyük numaraya otomatik eşleştirdiği için komut gönderirken Fiziksel numara gerekmez.

- * Analog Anten/Kablo

Veri 00 : Fiziksel Kanal Numarası

- Anten (ATV): 02~45 (Ondalık: 2 ~ 69)

- Kablo (CATV) : 01, 0E~7D (Ondalık: 1, 14~125)

[Data 01 ~ 04]: Büyük/Küçük Kanal Numarası

Veri 01 & 02: xx (Dikkate almayın)

Veri 03 & 04: xx (Dikkate almayın)

Veri 05: Giriş Kaynağı (Analog)

- 00 : Anten TV (ATV)

- 01 : Kablo TV (CATV)

- * Dijital Anten/Kablo

Veri 00 : xx (Dikkate almayın)

[Data 01][Data 02]: Düşük baytlı Kanal Verisi

Veri 01 : Yüksek baytlı Kanal Verisi

Veri 02 : Düşük baytlı Kanal Verisi

- 00 01 ~ 27 0F (Ondalık: 1 ~ 9999)

[Data 03][Data 04]: Küçük Kanal Numarası

Veri 03 : Yüksek baytlı Kanal Verisi

Veri 04 : Düşük baytlı Kanal Verisi

Veri 05 : Giriş Kaynağı (Dijital)

- 02 : Anten TV (DTV) – Fiziksel Kanal Numarası kullanın

- 06 : Kablo TV (CADTV) – Fiziksel Kanal Numarası kullanın

- 22 : Anten TV (DTV) – Fiziksel Kanal Numarası kullanmayın
- 26 : Kablo TV (CADTV) – Fiziksel Kanal Numarası kullanmayın
- 46 :Kablo TV (CADTV) – Sadece Fiziksel/Büyük Kanal Numarası Kullanın (Tek Parça Kanal)
- 66 :Kablo TV (CADTV) – Sadece Büyük Kanal Numarası Kullanın (Tek Parça Kanal)
- 0b : Kablo DTV Plus – Fiziksel Kanal Numarası kullanın
- 2b : Kablo DTV Plus – Fiziksel Kanal Numarası kullanmayın
- 4b : Kablo DTV Plus – Sadece Fiziksel/Büyük Kanal Numarası Kullanın (Tek Parça Kanal)
- 6b : Kablo DTV Plus – Sadece Büyük Kanal Numarası Kullanın (Tek Parça Kanal)

Her büyük ve küçük kanal verisi için iki bayt bulunur, normalde yalnızca düşük olan bayt kullanılır (yüksek bayt 0'dır).

* Ayar Komut Örnekleri:

1. Analog kablo (NTSC) kanal 35'e ayarlayın.

Set ID = Tümü = 00
 Veri 00 = Kanal Verisi 35 = 23
 Veri 01 & 02 = Büyük Yok = 00 00
 Veri 03 & 04 = Küçük Yok = 00 00
 Veri 05 = Analog Kablo TV = 01
 Toplam = **ma 00 23 00 00 00 00 01**

2. Dijital anten (ATSC) kanal 30-3'e ayarlayın.

Set ID = Tümü = 00
 Veri 00 = Fiziksel Bilinmiyor = 00
 Veri 01 & 02 = Büyük 30 = 00 1E
 Veri 03 & 04 = Küçük 3 = 00 03
 Veri 05 = Dijital Anten TV = 22
 Toplam = **ma 00 00 00 1E 00 03 22**

Ack [a][][Set ID][][OK][Data 00][Data 01]
 [Data 02][Data 03][Data 04][Data 05]
 [x][a][][Set ID][][NG][Data 00][x]

• Japon Modeli için

► Kanalı aşağıdaki fiziksel/büyük/küçük numaraya ayarlamak için.

Transmission [m][a][][0][][Data00][][Data01]
 [][Data02][][Data03][][Data04][][Data05][Cr]

* Dijital Anten/Uydu

Veri 00: xx (Dikkate almayın)

[Data 01][Data 02]: Büyük Kanal Numarası

Veri 01: Yüksek baytlı Kanal Verisi

Veri 02: Düşük baytlı Kanal Verisi
 - 00 01 ~ 27 0F (Ondalık: 1 ~ 9999)

[Data 03][Data 04]: Küçük/Alt Kanal Numarası(Uyduda dikkate almayın)

Data 03: Yüksek baytlı Kanal Verisi

Data 04: Düşük baytlı Kanal Verisi

Data 05 : Giriş Kaynağı (Japonya için Dijital/Uydu)

- 02 : Anten TV (DTV)
- 42 : Anten TV (DTV) – Sadece Fiziksel/Büyük Kanal Numarası Kullanın (Tek Parça Kanal)

- 62 : Anten TV (DTV) – Sadece Büyük Kanal Numarası Kullanın (Tek Parça Kanal)
- 07 : BS (Yayın Uydusu)
- 08 : CS1 (İletişim Uydusu 1)
- 09 : CS2 (İletişim Uydusu 2)

* Ayar Komutu Örnekleri:

1. Dijital anten (ISDB-T) kanal 17-1'e ayarlayın.

Set ID = Tümü = 00
 Veri 00 = Fiziksel Bilinmiyor = 00
 Veri 01 & 02 = Büyük 17 = 00 11
 Veri 03 & 04 = Küçük/Alt 1 = 00 01
 Veri 05 = Dijital Anten TV = 02
 Toplam = **ma 00 00 00 11 00 01 02**

2. BS (ISDB-BS) kanal 30'a ayarlayın.

Set ID = Tümü = 00
 Veri 00 = Fiziksel Bilinmiyor = 00
 Veri 01 & 02 = Büyük 30 = 00 1E
 Veri 03 & 04 = Dikkate Almayın = 00 00
 Veri 05 = Dijital BS TV = 07
 Toplam = **ma 00 00 00 1E 00 00 07**

* Bu özellik modele göre değişiklik gösterir.

Ack [a][][Set ID][][OK][Data 00][Data 01]
 [Data 02][Data 03][Data 04][Data 05]
 [x][a][][Set ID][][NG][Data 00][x]

21. Kanal (Program) Ekle/Sil (Atla)
 (Command: m b)

► Bir sonraki seferde mevcut kanalı (programı) atlamak için.

Transmission [m][b][][Set ID][][Data][Cr]

Veri 00 : Del (Sil) (ATSC,ISDB)/Skip (Atla) 01 : Ekle (DVB)

Ack [b][][Set ID][][OK/NG][Data][x]

* Kaydedilen kanal durumunu sil (ATSC, ISDB) / atla (DVB) ya da ekle olarak ayarlayın.

22. Tuş (Command: m c)

► Kızılötesi uzaktan kumanda kodunu göndermek için.

Transmission [m][c][][Set ID][][Data][Cr]

Veri Tuş kodu - s.2.

Ack [c][][Set ID][][OK/NG][Data][x]

23. Control Back Light (Arka Işık Kontrolü)
 (Command: m g)

• LCD TV/LED TV için

► To control the backlight.

Transmission [m][g][][Set ID][][Data][Cr]

Veri Min : 00 to Max : 64

video dışındaki 3D videoyu 2D
videoya değiştir

- * Dönüştürme gereksinimlerinin karşılanmadığı durumlarda komut NG (İyi Değil) olarak kabul edilir.

5) [Data 00] 09 olduğunda

00 : Standart 01 : Spor
02 : Sinema 03 : Ekstrem
04 : Manuel 05 : Otomatik

Ack [v][][Set ID][][OK][Data00][Data01][x]

[v][][Set ID][][NG][Data00][x]

27. Auto Configure (Oto. Yapılandırma)
(Command: j u) (Modele bağlı olarak
değişkenlik gösterebilir)

- Resim konumunu otomatik olarak ayarlamak
ve görüntü titremesini otomatik olarak en aza
indirmek için. Sadece RGB (PC) modunda çalışır.

Transmission [j][u][][Set ID][][Data][Cr]

Veri 01 : Otomatik Yapılandırmayı Çalıştır

Ack [u][][Set ID][][OK/NG][Data][x]