

# QUICK START GUIDE

BC

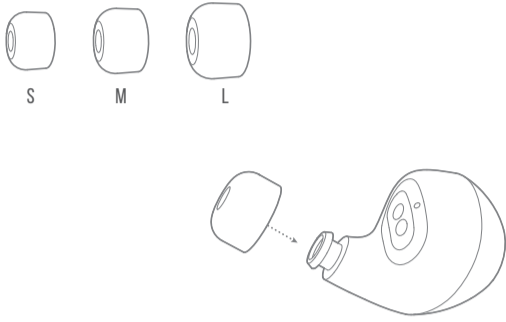
T100TWS



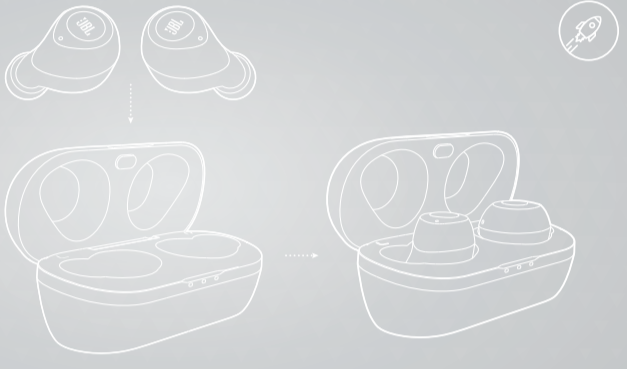
## WHAT'S IN THE BOX



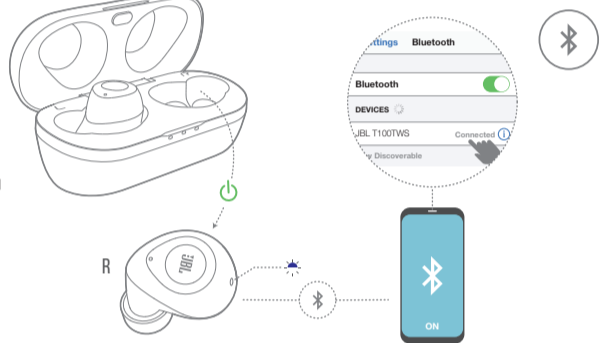
## HOW TO WEAR



## FIRST TIME USE



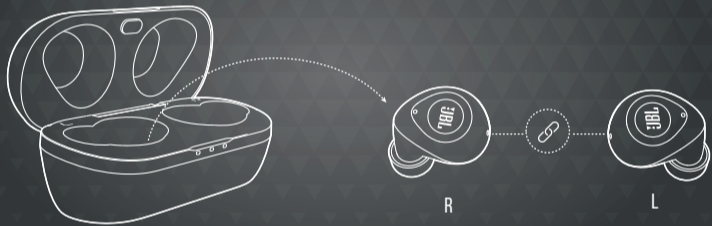
## POWER ON & CONNECT



AUTOMATICALLY ENTERING PAIRING MODE

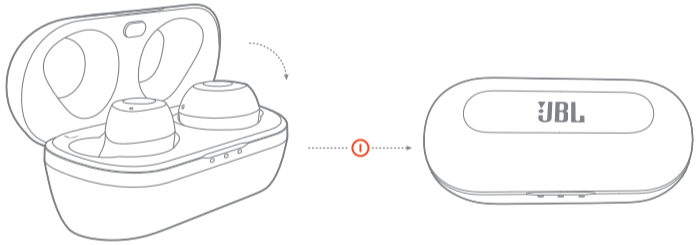
CHOOSE "JBL T100TWS" TO CONNECT

## PAIRING

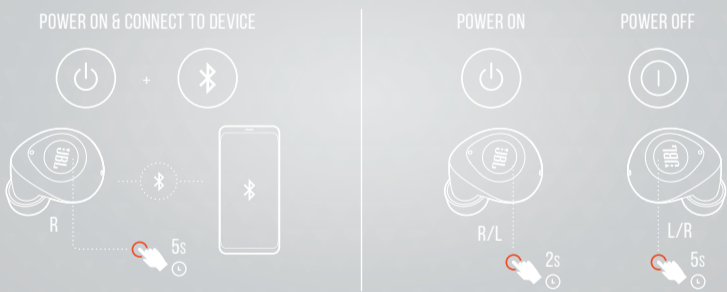


AUTOMATIC PAIRING

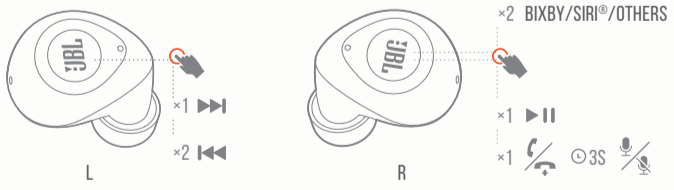
## POWER OFF



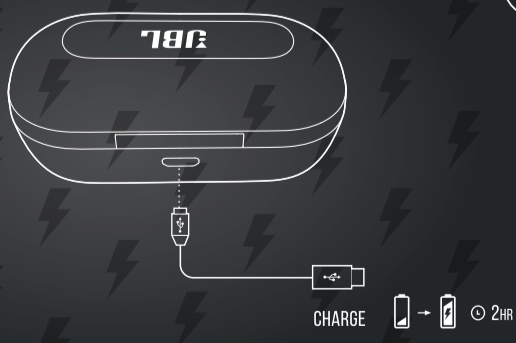
## MANUAL CONTROLS



## BUTTON COMMAND



## CHARGING



## LED BEHAVIORS

